



# Giacomo Longoni

Architect

Date of birth: 16 August 1972

Nationality: Italian

Phone N (+39) 339.4740288

giacomo.longoni@yahoo.it

## EDUCATION and WORKING EXPERIENCES

Collaboration with

RENZO PIANO BUILDING WORKSHOP	GENOVA
AXEL SHOENERT ARCHITECTS	PARIS
RENZO PIANO BUILDING WORKSHOP	PARIS
RENZO PIANO BUILDING WORKSHOP	GENOVA
OTTAVIO DI BLASI ARCHITECTS	MILANO

MASTER DEGREE at POLITECNICO DI MILANO

1<sup>st</sup> International Workshop of Architecture Baeza Es

3<sup>rd</sup> International Workshop of Architecture Biarritz Es

2005-2007

2005

2003-2005

2001-2003

2000-2001

2000

1998

1996

## LANGUAGES

ITALIAN



ENGLISH



SPANISH



FRENCH



## SPECIALIZATION

URBAN MASTER PLANNING

HIGH RISE BUILDING DESIGN DEVELOPEMENT

BUILDING FACADE DESIGN

APARTMENT AND OFFICE RENNOVATION

APARTMENT AND OFFICE SPACE PLANNING

MANAGING DIRECTION for

Concept Design

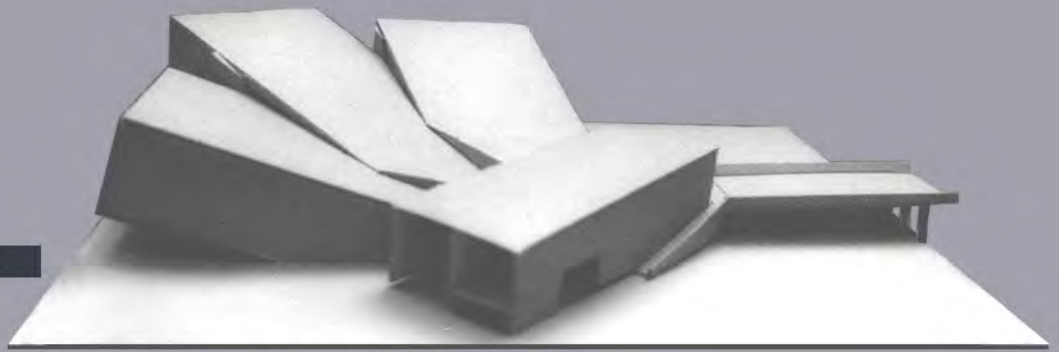
Schematic Design

Design Developement

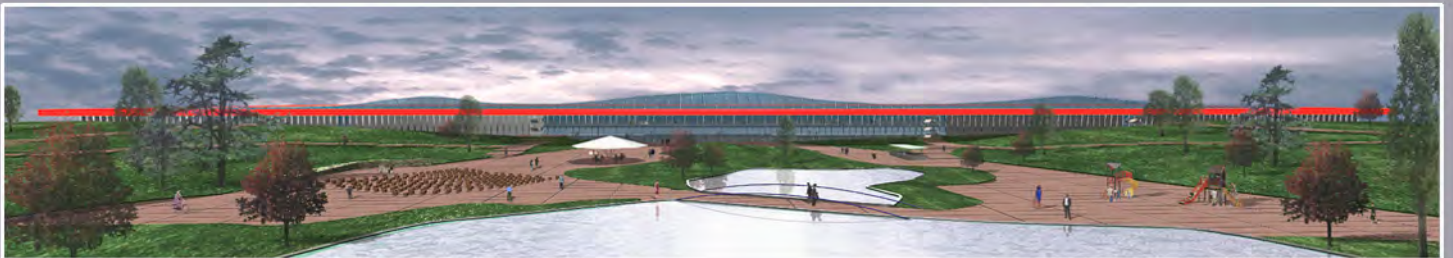
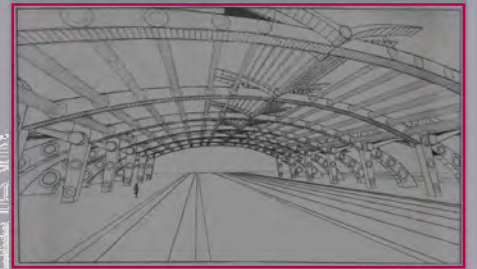
OBJECT AND FURNITURE DESIGN CONCEPT AND INDUSTRIAL DEVELOPEMENT



## PUBLIC EXHIBITIONS

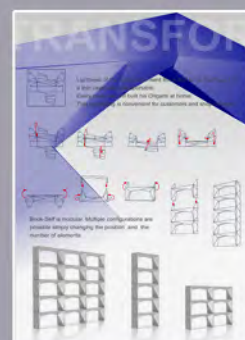
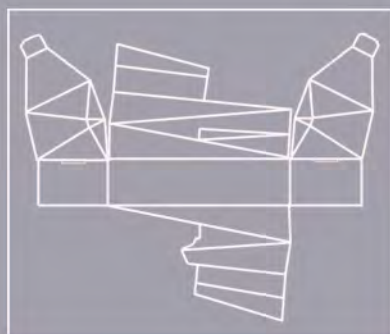


- *"Emigranti"*: Politecnico di Milano - Auditorium en Pamplona- Project developed during Erasmus scholarship.
- *"The Landscape Rediscovery as Project Reason"* -Housing in Cassina de' Pecchi- Politecnico di Milano  
Published on department's copybooks n°156 1997-1998
- *"Piazza Tirana and S. Cristoforo Station"*- Politecnico di Milano- Milano-Project of square reorganization, a new bridge railway station on the railroad and on the canal. Exhibition during the Couse of Interior Design II 1999

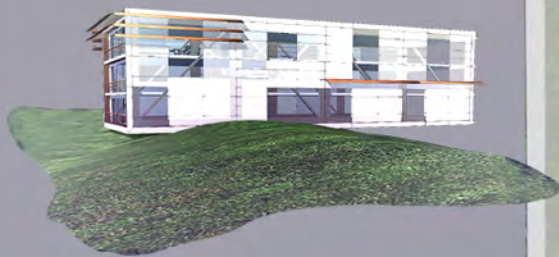


## COMPETITIONS

- 1°prize: *"Sculpture Competition Town of Spinetoli"*-VI Edition- August 2000  
Sculpture realized during the competition is today in the museum of the town
- 2°prize: International competition *"Architecture, Image and Emotion."* organized by *"l'Arca Magazine"* and promoted by *"Auchan Megastores"* for a new kind of mall. with *Ottavio di Blasi*  
The project is published on *"l'Arca Magazine"* n°158 April 2001
- Special Prize "Young & Design 2007" as best project affording enviromental issues with eco-friendly design during Salone del Mobile 2007

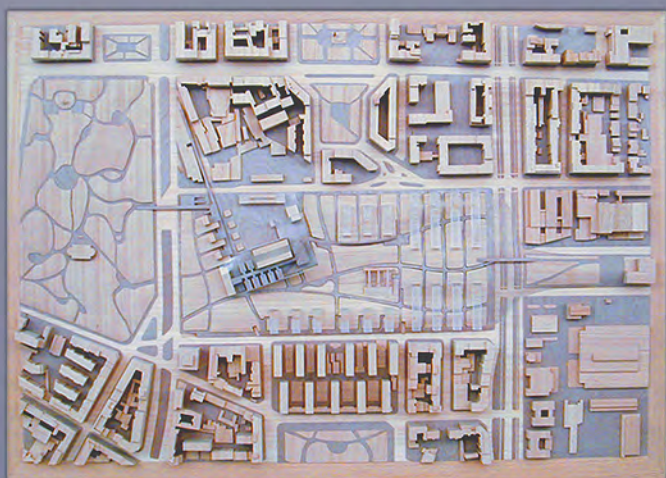
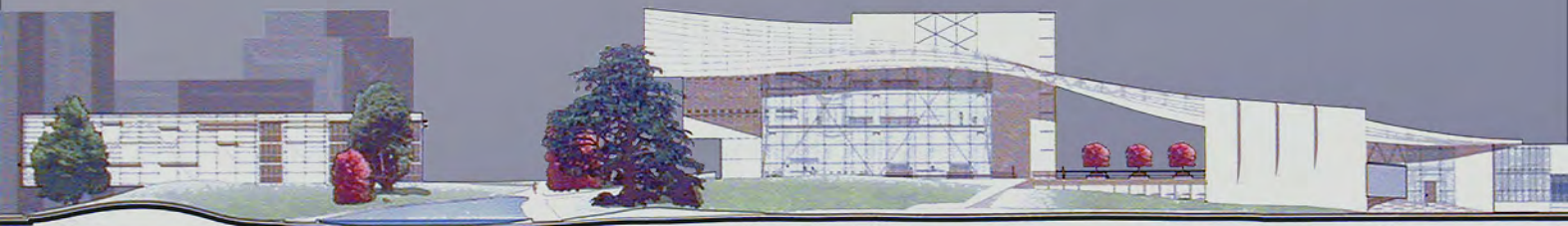
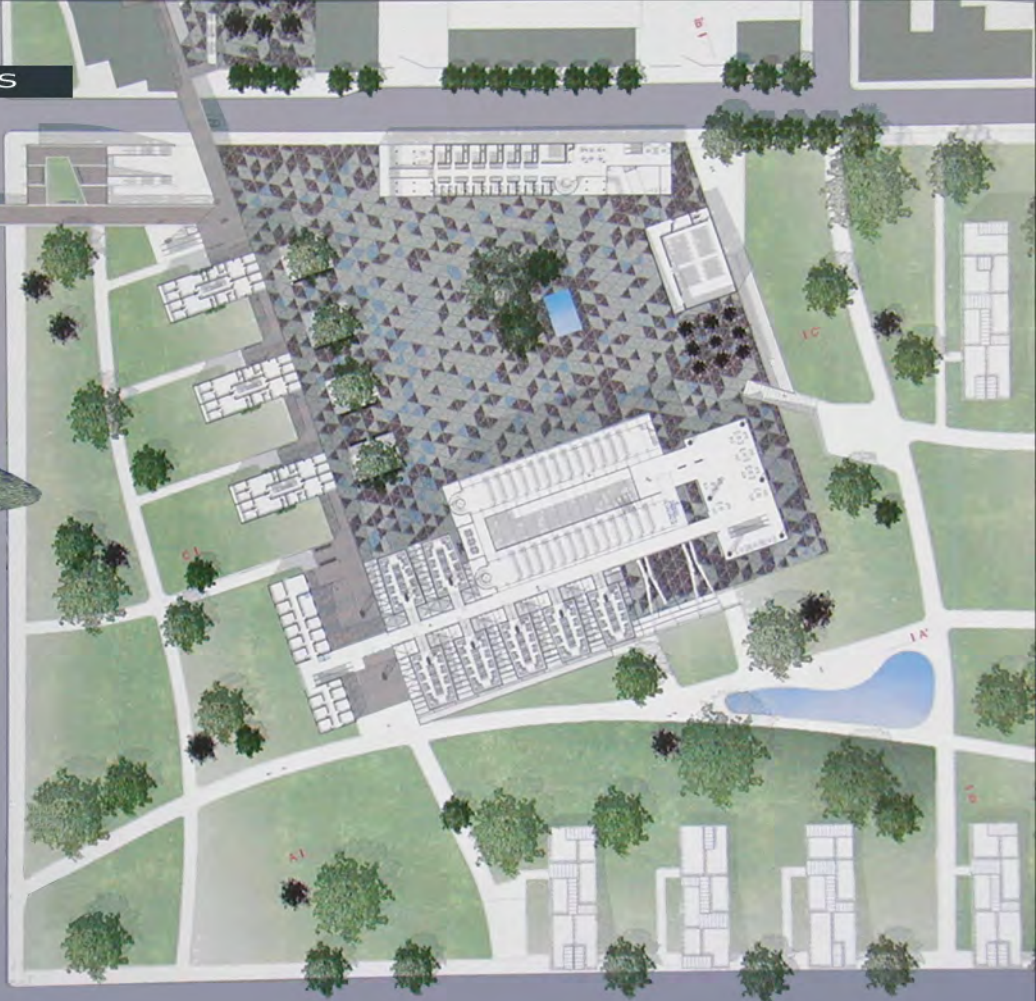






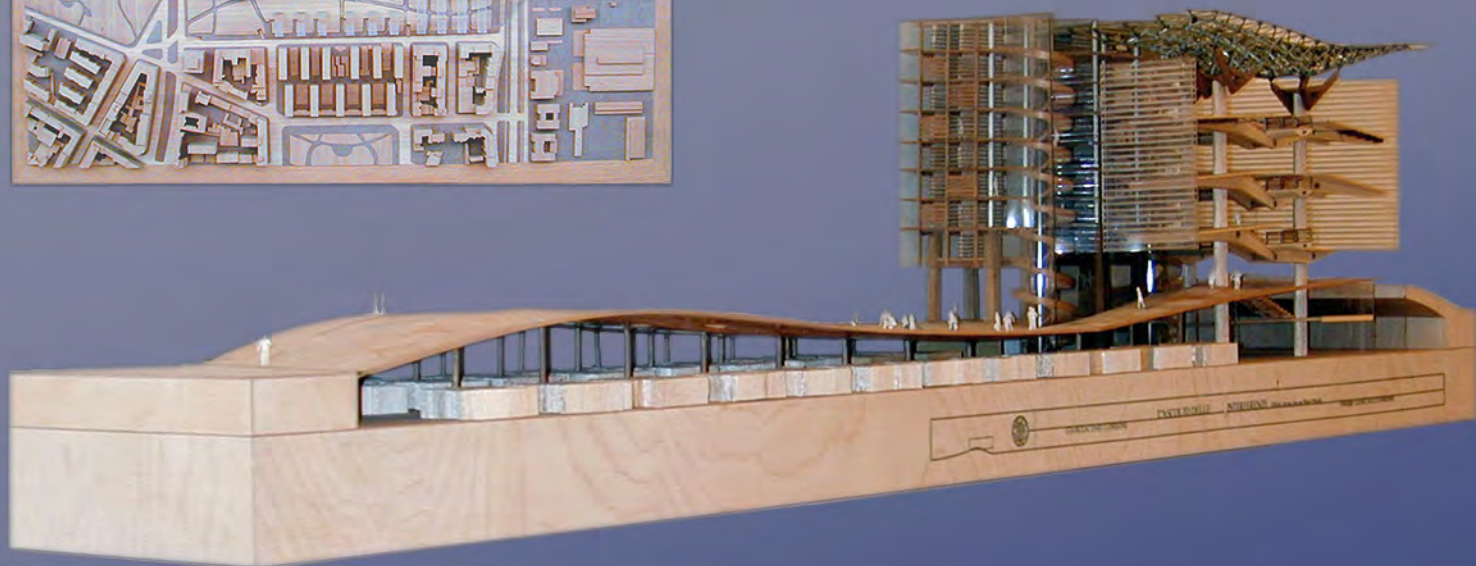
- ■ ■ The exposed project is looking at the new European Lybrary -BEIC- competition (Bolles & Wilson winner) as an occasion to design a new city park shaped by the library and new houses.

The park links the exsistent green areas getting a strong identity and representing with the underground train station a new entrance for Milan.



Triennale of Milan 21 july-26 october  
*"Surburbs and new Urban Design"*  
 organized by Politecnico di Milano  
 Architectural Design Department

with Prof. Giancarlo Consonni  
*"The listening of the interferences"*  
*Milan a project for Porta Vittoria*





# Renzo Piano Building Workshop



HIGH MUSEUM BUILDING A

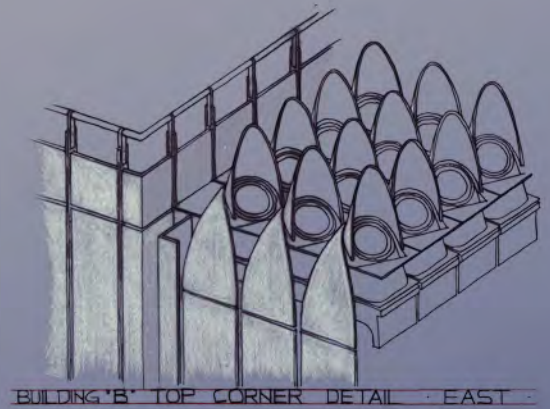
HIGH MUSEUM BUILDING B

OFFICE BUILDING

RESIDENCE HALL



- High Museum of art - Atlanta - Design Development
  - study of the facade
  - panel system detail
  - corner building detail
  - plaza canopy study



- New Residence Hall and Sculpture Building-Atlanta- Design Development and Construction Document
  - study of the facade
  - sculpture building organization
  - study of the rooms typology and furniture
  - window shades sistem detail development
- California Academy of Sciences-Golden Gate Park-San Francisco Design Development
  - study of the facade
  - roof 3D model study, analysis of the covering panel sistem







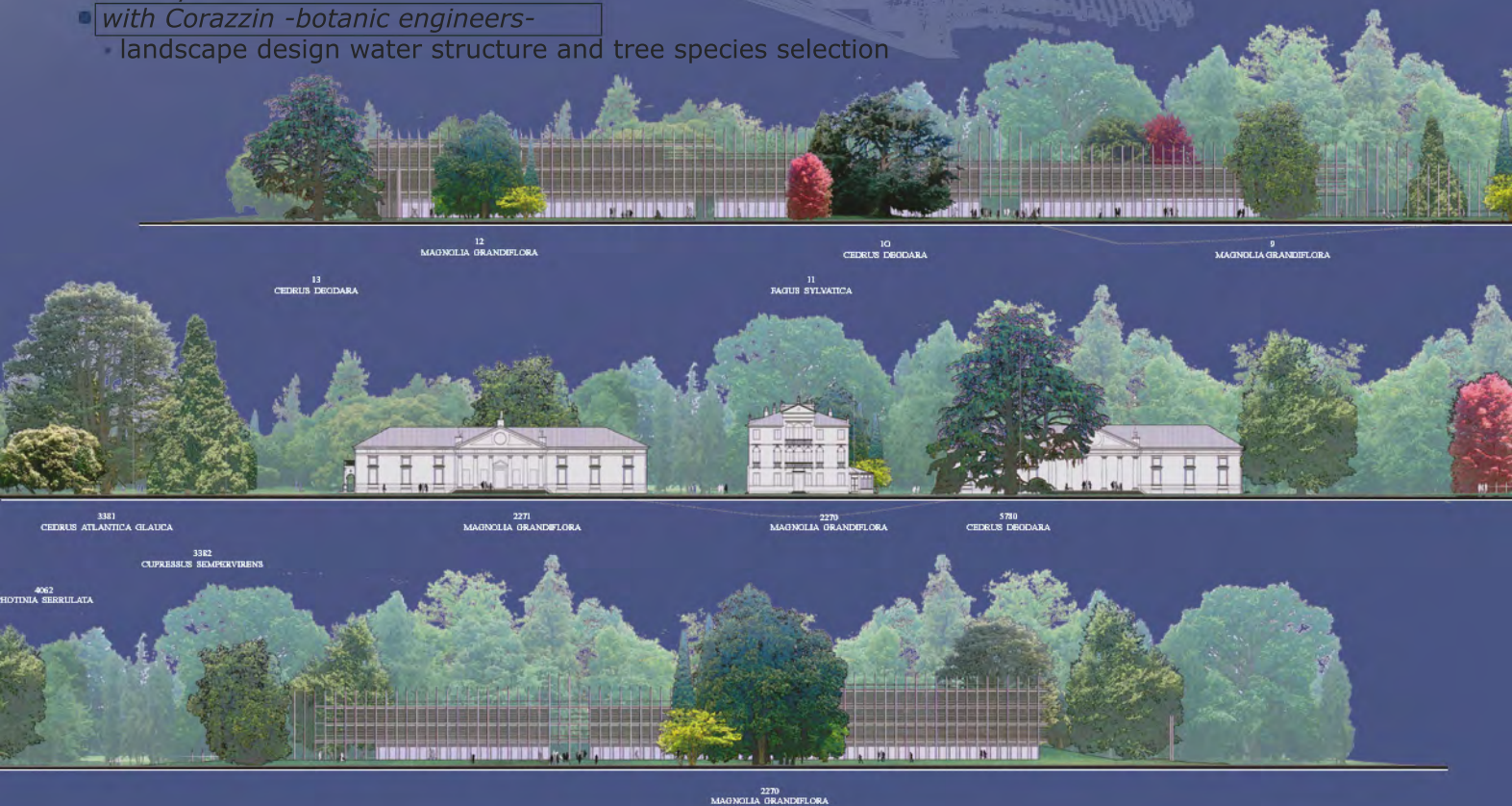
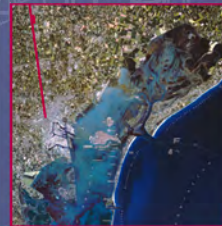
# Renzo Piano Building Workshop

Along the main road going from Treviso to Venezia, the Treviso University project involves the addition of two new wings for classrooms and student apartments. In the new masterplan proposal, the project site, which occupies the existing park of an ancient Palladian Villa, doubles in size in accommodating the university campus and its new programmatic requirements, along with preserving the original grounds of the Villa. Buildings are connected by a path in the park, covered with a glass canopy that becomes the roof of the new pavilions.



## Treviso University Campus

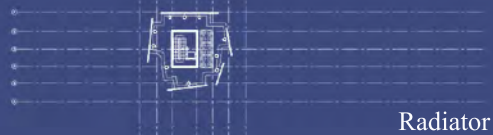
- Treviso-Venezia-
- Masterplan and Schematic design
- concept development by study models and sketches
- study of the facade and of the roof texture
- study of the university spaces distribution
- student room typology and rearrangement of the Palladian Villa spaces
- *with Schlaich -engineers-*
  - analysis of different roof structure options
  - detail and materials
- *with Favero & Milan - engineers-*
  - analysis of the residential building loading structure
- *with Muller BBM -acoustic engineers-*
  - study of the traffic noise reduction barriers
- *with Corazzin -botanic engineers-*
  - landscape design water structure and tree species selection



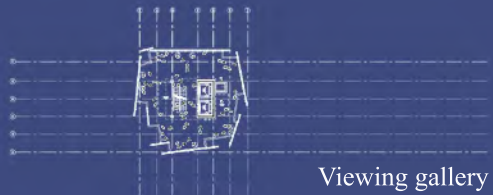


# Renzo Piano Building Workshop Paris

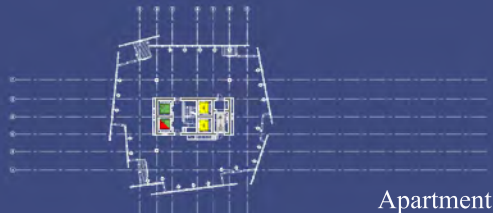
## London Bridge Tower



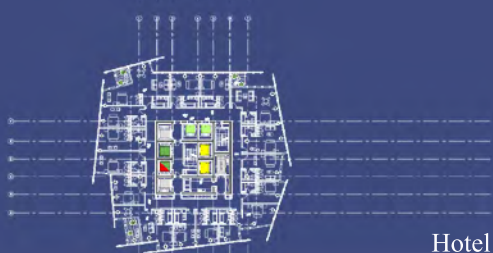
Radiator



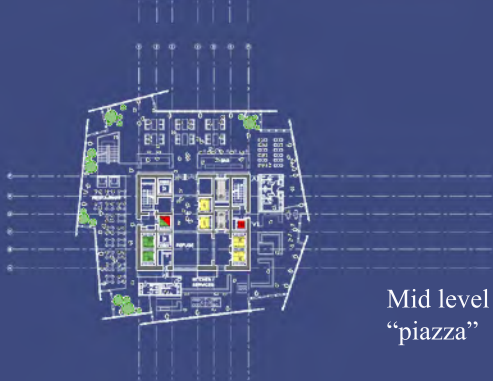
Viewing gallery



Apartment



Hotel



Mid level  
"piazza"



Offices





# London Bridge Tower

Near the Thames, in southwark, London Bridge Tower is a multifunctional building on 72 floors 306 meters tall. The building is composed by offices at lower floors than a mid level public “piazza” with restaurants and cafe’, an hotel with 200 rooms and some apartments. On the top of the tower a viewing gallery and the radiator : natural cooling system that using wind reduce heat loads of the building.

## Space planning:

Office layout

Apartment layout

Mid level gallery

Top viewing gallery

Hotel lobby

Plant levels

## Core design layout:

Fire strategy and regulations with Arup fire

Lift strategy with Lerch & Bates

Concrete structure with WSP cantor seinuk

Building strategy with Multiplex

Core risers layout and plant levels with Arup

Coordination of core design team

Building access lobbies

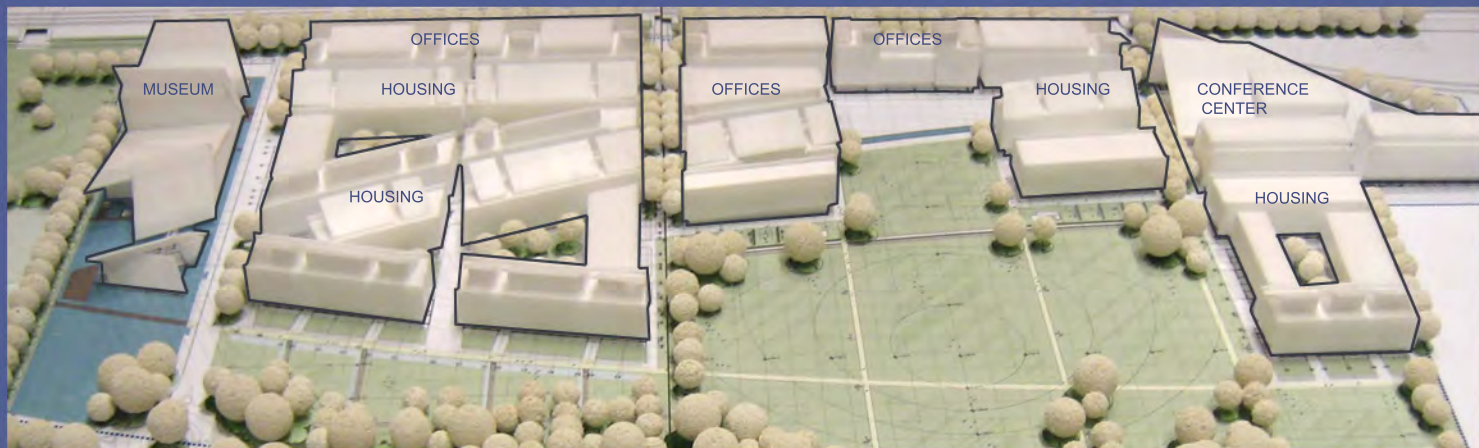
Delivery strategy

Presentation drawings

Study models







## Area Ex Michelin -Trento-

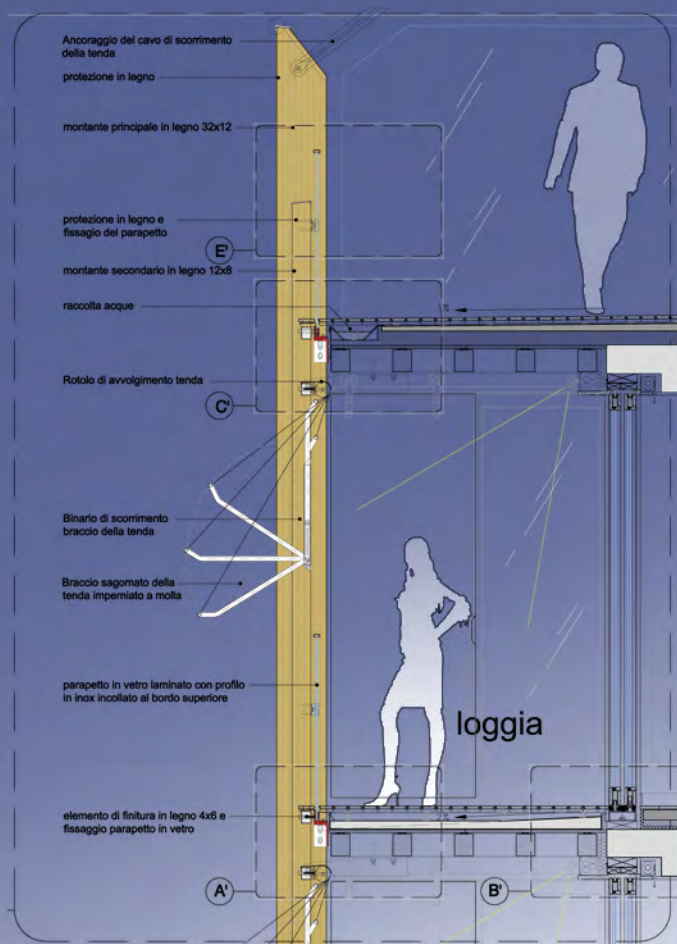
Between railtrack and the river Adige, this project connects the historical center with the city riverside.

The expansion of the city in this direction is comprised of a mix of housing, office buildings and retail with the addition of a new museum of science and a conference center, this intervention revitalizes the river edge.

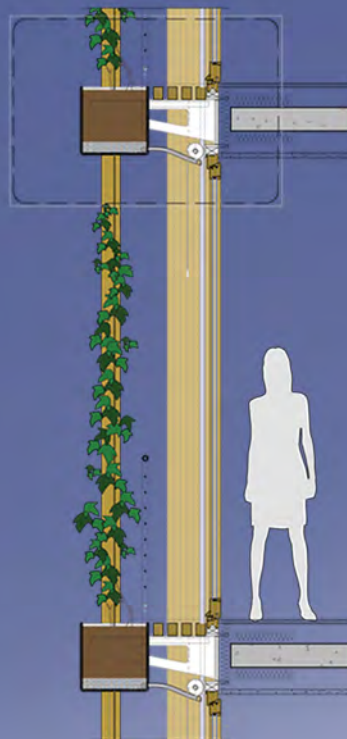
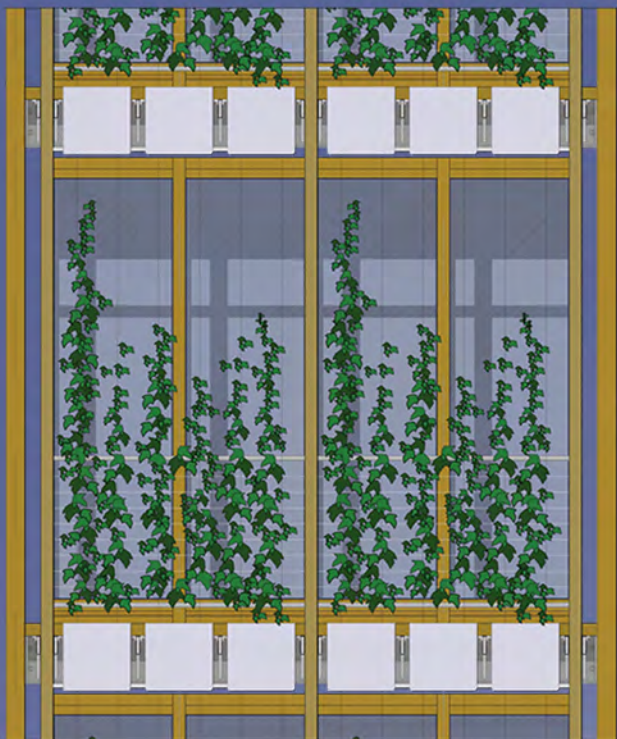
### Housing facade

Facades are composed by a structural wood grid with sliding panels and swinging tents infill.

Wood components, details and treatments has been tested with the collaboration of the Italian National Research Institute CNR.







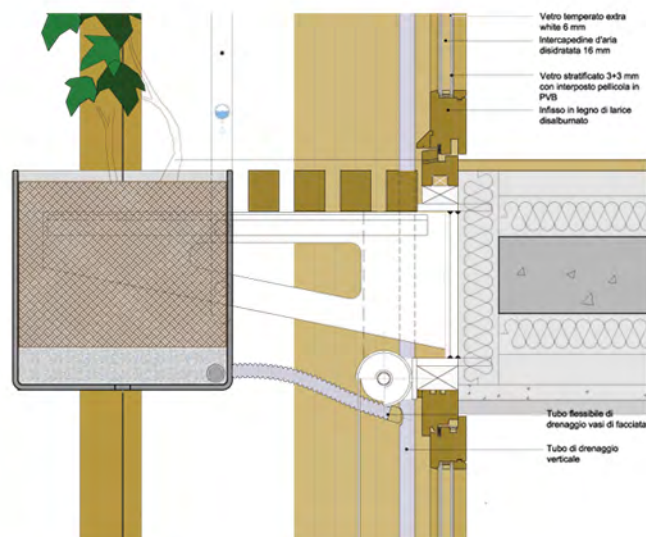
## Office facade

The Eastern Office facade has been studied with integrated Ivy screen system.

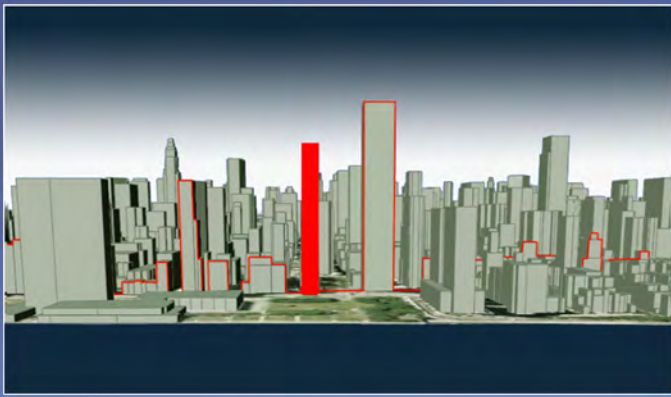
The Ivy wall works as natural sun screen changing seasonally for density and colour.

This system also works as a filter, protecting privacy of the office spaces from the view of the rail track running on this side of the building.

All facades has been developed in order to achieve acoustical and thermal performances above normal standards.



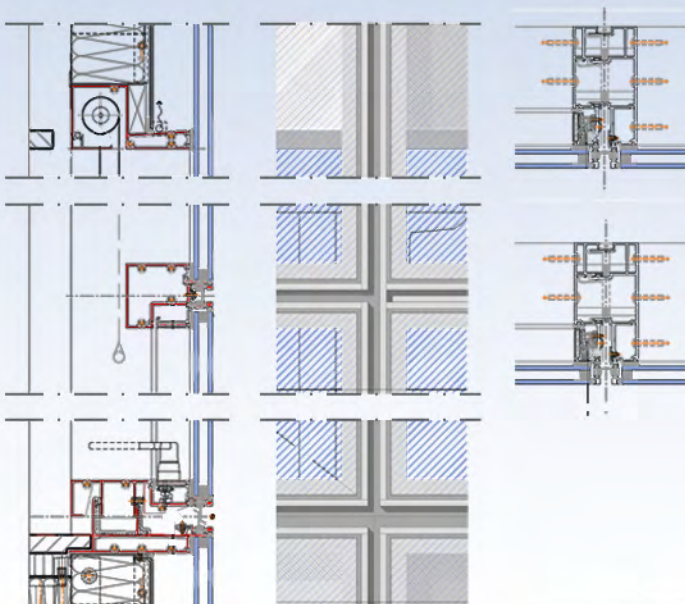
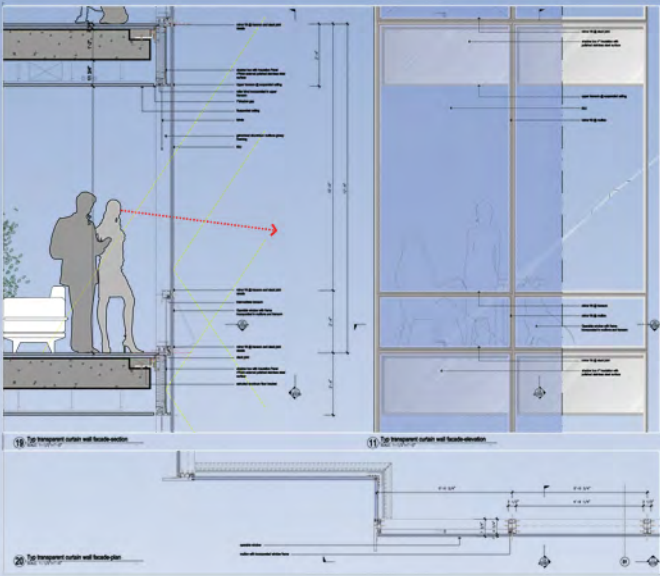




# U.N. PLAZA New York

The UN plaza is a 45 floor residential tower situated in front of the United Nations and faces Hudson river.

The curtain wall facade has been studied in collaboration with Permastelisa to comply with NY energy code mantaining a large percentage of glass facade; details has been refined incorporating operable windows and mirror shadow boxes.



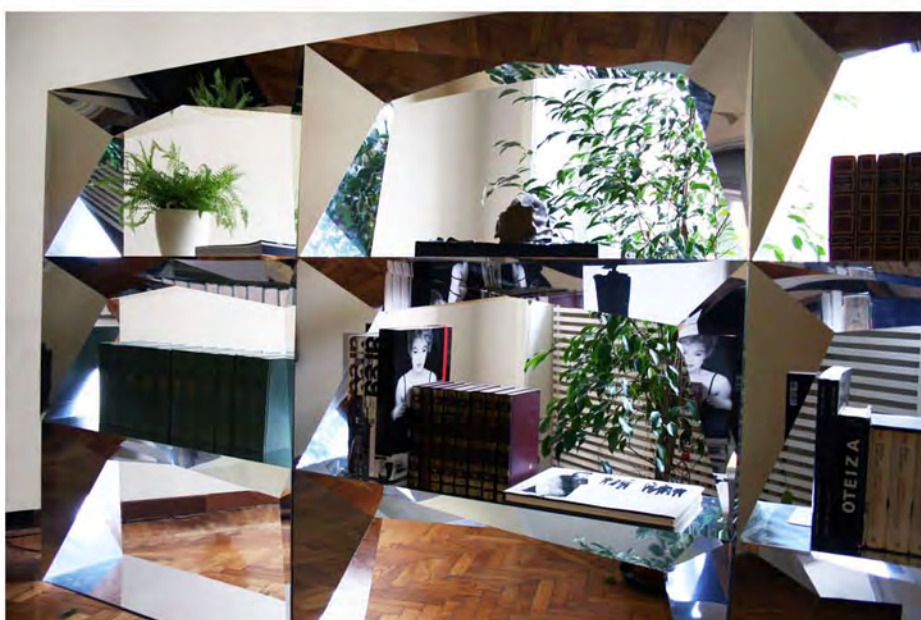
104'-0"

86'-0"

10'-0"

FIRST AVENUE





Aluminium Book Shelf is produced in glossy mirror finishing and satin finishing.

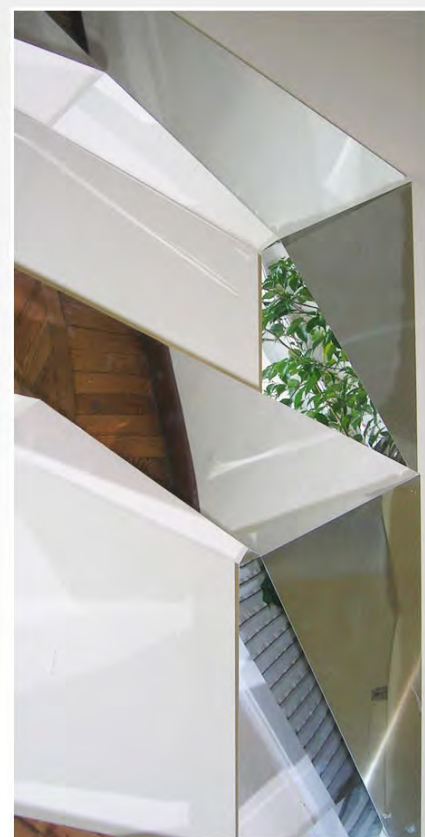
Every module measure L 100 H 50 W 30 and can be composed upon user wishes.



[www.Gdesign.eu](http://www.Gdesign.eu)



# ALUMINIUM



Aluminium Book Shelf is produced with a special laser cut technique and folded as an Origami,  
Mirror finishing reflect light, objects and surrounding becoming invisible and showing every object and book from multiangle position.

Book Shelf design won "Young & Design" prize during Salone del Mobile 2007 for the most environment - friendly design.